

# METAMORA ASSOCIATION FOR HISTORIC PRESERVATION

## NEWSLETTER

Visit our Website at  
[www.historicmetamora.com](http://www.historicmetamora.com)

August 2010

Open Houses Each Sunday 1-4

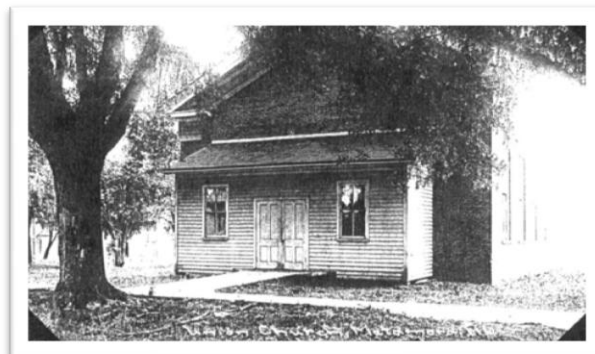
### Christian Union

To learn more about Christian Union, and the story on Brighton Park, visit

#### New on the Web...

Find the complete story and pictures at

[www.historicmetamora.com](http://www.historicmetamora.com)



The first Metamora Christian Union Church began in 1855 in a church built by the Methodists. There were five Protestant churches in the area with low memberships and it was difficult for any of these to have a full time minister. It was thought that if they would merge together they could be better served. So in 1872 the Methodists and the Congregational Churches united. In the next few years the remaining churches, Episcopal, Christian (Disciples) and American Baptist also joined together. In 1878 those united congregations formally were called the Metamora Christian Union Church.

(at left) the MCU Church, founded in 1855 located on South Hanover Street

### Old Settlers and Garage Sale

Two successful projects help pay for the window project

#### Do you remember..?

In 1964, Dairy Day (Friday) Old Settlers ride tickets were 15¢ and a bottle cap from Schierer's!



OLD SETTLERS. Except for a downpour on opening night, the 2010 Old Settlers proved to be a winner for MAHP. Raffle ticket sales were brisk and extra sales were generated by special limited edition color note cards of the Courthouse, which were donated by Peg Shea, the artist and wife of former Metamora resident Terry Shea. A special thanks to Peg for her generosity.

LUCKY. Not only was Old Settlers good for the MAHP coffers, but Lowell Koch ("I never win anything") took home the \$100 raffle prize.

← Super saleswomen Laure and Shirley (at left) brought in the buyers!

GARAGE SALE. July 28-30 turned out to be a near-perfect day for garage sale shoppers – and MAHP.

1870 – Old Settlers was first organized. John Summers was its first president.

### Colin Foley Project and What's New...



A big thanks to Colin Foley for loaning us his diorama of the Stevenson House. *Outstanding job!!* When Colin was in the 4<sup>th</sup> Grade at St Mary's, the class was assigned a project in which they could create an important Illinois landmark. Colin chose the Stevenson House.

Two years later, now a 6<sup>th</sup> Grader, Colin completed his project. He graciously allowed us to display his work at the House. You may have seen it on display at Old Settlers.

If you get a chance, stop by and see it. The detail and craftsmanship are just outstanding – 4 chimneys, raised panel doors, paned windows, and neat-as-a-pin bricking! Thank you, Colin!!

Also thanks to Chrisanne Burr for donating two original hats that belonged to Bertha Snyder. You may recall that Mrs. Snyder always wore a stylish hat – even when outside working in the garden.

### From the Old Roads File – The Santa Fe Trail

Where did the name come from?

Where did it come from?

Where did it go?

When was it first used?

LOCATION AND TIMELINE. Santa Fe Road is believed to be the second road from Peoria to Chicago. It was authorized by the state legislature in 1833 and crossed the river at the narrows just above the old Upper free Bridge and then followed the ferry road out to the first Chicago road, which is roughly parallel to the present Spring Bay Blacktop. It then turned almost straight east and ran past Lourdes to Metamora and then through Magnolia and on to Ottawa and Chicago. At one time there was an inn located across from Lourdes, which made a welcome resting place – sort of a half-way house – on the long journey from Peoria to Metamora.

HOW IT WAS MADE. It's believed the earliest road was created by dragging a heavy log through the thick prairie grass, which eventually became a wagon trail and a dirt road of sorts.

ITS NAME. The origin of its name is open to speculation. Some thought it was named after the Santa Fe railroad, who once surveyed the route for a possible rail line. But the road was in existence long before the railroad. A second possibility is that it was named after the Santa Fe Train, which took pioneers westward from St. Joseph, Missouri. Both Santa Fes were rough and hilly.

### Welcome Lee Summer...!

At the June board meeting, the Metamora Association for Historic Preservation welcomed newest member Lee Summers. Lee lives on County Road 1550 in Metamora and welcomes hearing from the community. Welcome aboard, Lee.

### Contact Us

Questions, ideas...

We would love to hear from you. Laure Adams, President, 369-2353 or [jrfarmer@mtco.com](mailto:jrfarmer@mtco.com); Kenneth Willman, Vice President, 367-4426; Shirley Adams, Secretary, 367-2289; Jack Weddle, Treasurer, 367-4017 or 645-0963 or [jweddle@mtco.com](mailto:jweddle@mtco.com); Board members: Barbie Perry, 678-8402, [barbperry@mchsi.com](mailto:barbperry@mchsi.com), Dave Pohlman, 369-3290; [pohlman46@hotmail.com](mailto:pohlman46@hotmail.com); Lee Summer, 367-4059, 635-0259, [lsummer@mtco.com](mailto:lsummer@mtco.com)